

## TRANSFORMATION, PHASE II IMAGE SHEET

Media Contact: LACMA Press Relations, [press.org](http://press.org), 323 857-6522

For the most up-to-date images, visit LACMA's Press Room at [lacma.org/info/PressReleases.aspx](http://lacma.org/info/PressReleases.aspx)



Stewart and Lynda Resnick



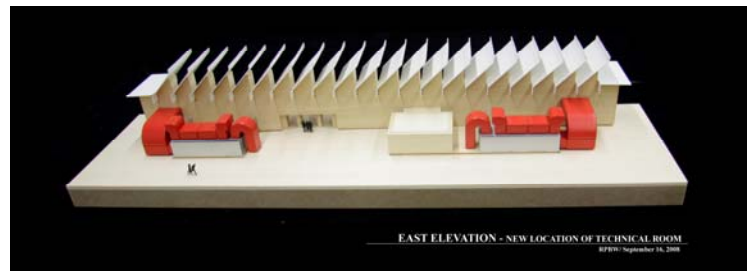
Michael Govan



Renzo Piano



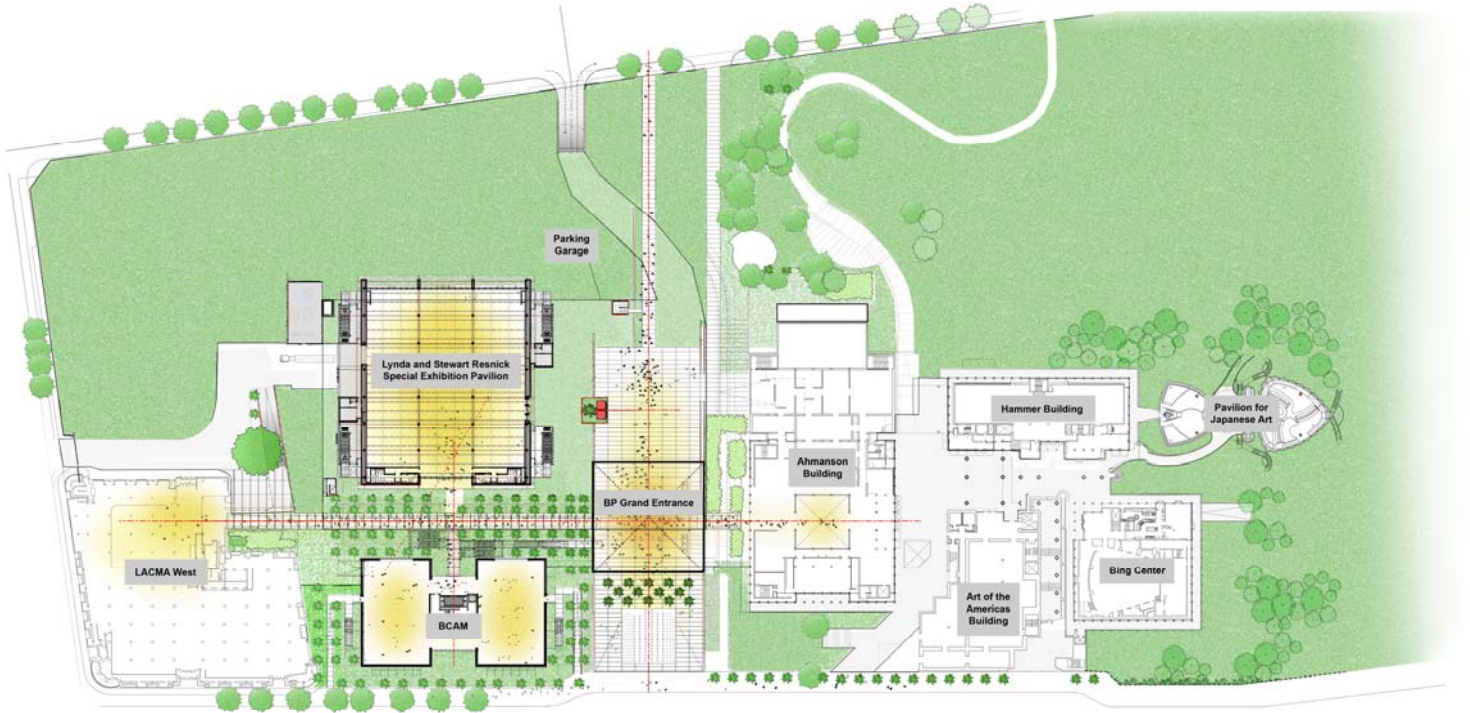
Model, northern aerial view  
Lynda and Stewart Resnick Exhibition Pavilion  
Renzo Piano Building Workshop, architects  
Photo © 2008 Museum Associates/LACMA



Model, east elevation  
Lynda and Stewart Resnick Exhibition Pavilion  
Renzo Piano Building Workshop, architects  
September 16, 2008



Model, LACMA campus overview  
Renzo Piano Building Workshop, architects  
Photo © 2008 Museum Associates/LACMA



Site drawing, LACMA campus overview  
Renzo Piano Building Workshop, architects