

# CONNECT

## ON VIEW NOW

LEARN MORE AT LACMA.ORG



**MARSDEN HARTLEY:**  
**THE GERMAN PAINTINGS 1913-1915**  
August 3–November 30  
Member Previews: July 31–Aug. 2 | BCAM



**FRAGMENTARY TALES:**  
**SELECTIONS FROM THE LLOYD COTSEN**  
**"TEXTILE TRACES" COLLECTION**  
August 17–October 26 | Ahmanson Building



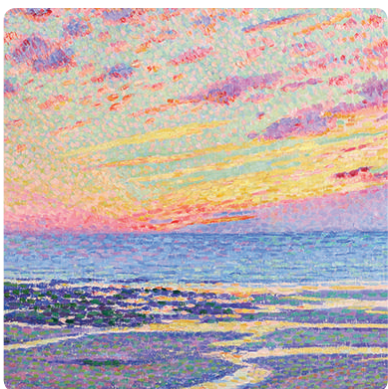
**VARIATIONS: CONVERSATIONS IN**  
**AND AROUND ABSTRACT PAINTING**  
August 24, 2014–March 22, 2015  
Member Previews: August 21–23 | BCAM



**NIGHT IN DAY**  
Through August 24 | Hammer Building



**SAM DOYLE: THE MIND'S EYE**  
Through September 1  
Art of the Americas Building



**EXPRESSIONISM IN GERMANY AND**  
**FRANCE: FROM VAN GOGH TO KANDINSKY**  
Through September 14 | Resnick Pavilion



**JOHN ALTOON**  
Through September 14 | BCAM



**TREASURES FROM KOREA: ARTS AND**  
**CULTURE OF THE JOSEON DYNASTY,**  
**1392-1910**  
Through September 28 | Hammer Building



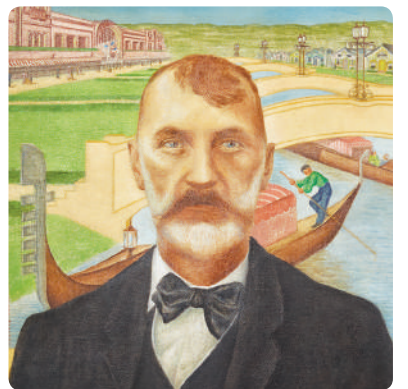
**PRINCELY TRADITIONS AND**  
**COLONIAL PURSUITS IN INDIA**  
Through October 12 | Ahmanson Building



**ZUAN: JAPANESE DESIGN BOOKS**  
Through October 12  
Pavilion for Japanese Art



**KIMONO FOR A MODERN AGE**  
Through October 19  
Pavilion for Japanese Art



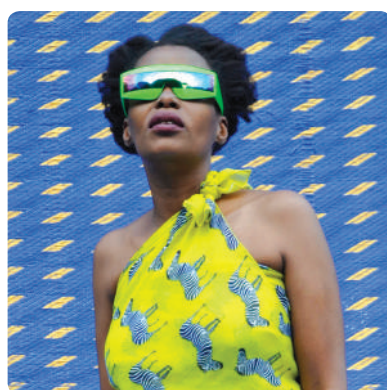
**EDWARD BIBERMAN, ABBOT KINNEY**  
**AND THE STORY OF VENICE**  
Through November 16  
Art of the Americas Building



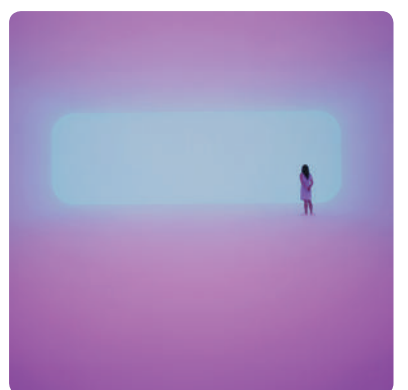
**ART DECO TEXTILES**  
Through November 30  
Ahmanson Building



**THE WRITTEN IMAGE: BOOKS AND**  
**PORTFOLIOS FROM THE RIFKIND CENTER**  
Through January 18, 2015  
Ahmanson Building



**HASSAN HAJJAJ: MY ROCK STARS**  
**EXPERIMENTAL, VOLUME 1, 2012**  
Ongoing | Ahmanson Building



**JAMES TURRELL: BREATHING LIGHT**  
Ongoing | Resnick Pavilion

## COMING SOON



**CLOSE-UP AND PERSONAL:**  
**18TH-CENTURY GOLD BOXES**  
**FROM THE ROSALINDE AND ARTHUR**  
**GILBERT COLLECTION**  
Opens September 6  
Through March 1, 2015



**HAUNTED SCREENS:**  
**GERMAN CINEMA IN THE 1920S**  
Opens September 21  
Through April 26, 2015

## VISIT

### HOURS

Mondays, Tuesdays, Thursdays: 11 am–5 pm  
Wednesdays: Closed  
Fridays: 11 am–8 pm  
Saturdays and Sundays: 10 am–7 pm

### RESTAURANTS

Ray's: 11:30 am–3 pm; 5–10 pm  
Reservations: 323 857-6180  
Stark Bar: 11 am–11 pm  
C+M: Opens at 10 am  
LACMA Café: Open during museum hours

### SHOPPING

The LACMA Store: 323 857-6146  
Art Catalogues: 323 857-6587  
Online Store: thelacmastore.org

### CONTACT

General info: 323 857-6000  
Tickets: 323 857-6010  
TTY: 323 857-0098  
Membership: 323 857-6151  
membership@lacma.org

### LACMA.ORG

News, exhibition and event info,  
and more | Updated daily

Follow LACMA on Facebook, Twitter,  
Tumblr, Pinterest, and Instagram.

Mobile: Download the LACMA app  
for iPhone/Android.

