

**AC1995.183.1.1-2**

Marina Abramovic

*Modus Vivendi*

1987

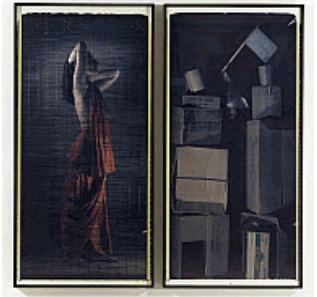
Dye-diffusion transfer (Polaroid) print

90 x 43 in. (228.60 x 109.22 cm)

Lender: Los Angeles County Museum of Art

Gift of Ann and Aaron Nisenson in memory of Michael Nisenson

Approved - LACMA obj



**AC1994.36.2.1-2**

Laura Aguilar

*Untitled No. 17*

From the series, "Clothed/Unclathed"

1991

Gelatin silver prints

Unframed: 20 x 16 in. (50.8 x 40.64 cm) each

Lender: Los Angeles County Museum of Art

Photography Discretionary Fund

Approved - LACMA obj



**AC1999.44.1**

Tina Barney

*Ken and Bruce*

1989

Dye coupler print

Image: 47 1/4 x 59 1/2 in. (120.02 x 151.13 cm)

Primary support: 50 1/8 x 63 in. (127.32 x 160.02 cm)

Secondary support: 50 1/2 x 63 in. (128.27 x 160.02 cm)

Lender: Los Angeles County Museum of Art

Gift of Franc Caggiano and Dan Logan

Approved - LACMA obj



**AC1997.4.1.1-3**

Nancy Burson

*One of the First Age Transformations from M.I.T.*

1979

3 gelatin-silver prints

Unframed each image: 2 1/2 x 2 1/2 in. (6.35 x 6.35 cm); Overall: 18 x 41 in. (45.72 x 104.14 cm); Framed (each):

15 3/8 x 12 7/8 x 1 3/8 in. (39.05 x 32.70 x 3.50 cm)

Lender: Los Angeles County Museum of Art

Ralph M. Parsons Fund

Approved - LACMA obj



**M.91.126a-b**

Sarah Charlesworth

*Figures*

1983

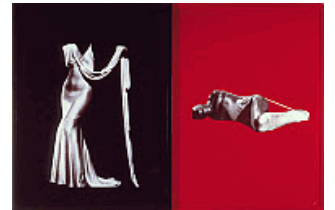
2 silver dye-bleach (Cibachrome) prints

Overall: 40 x 60 in. (101.6 x 152.4 cm)

Lender: Los Angeles County Museum of Art

Gift of the Frederick R. Weisman Art Foundation

Approved - LACMA obj



**M.85.123.46**

Larry Clark

*Runaway, California*

1974, printed 1981

Gelatin-silver print

Unframed: 12 x 8 in. (30.48 x 20.32 cm)

Lender: Los Angeles County Museum of Art

Gift of Barry Lowen

Approved - LACMA obj



**AC1996.195.9**

Judy Dater

*Self-Portrait, Salt Flats*

1981

Dye coupler print

Image: 18 1/16 × 14 1/8 in. (45.88 × 35.88 cm)

Primary support: 19 7/8 × 15 7/8 in. (50.48 × 40.32 cm)

Mat: 24 × 20 in. (60.96 × 50.8 cm)

Lender: Los Angeles County Museum of Art

Gift of Mark Story

Approved - LACMA obj

**AC1992.22.1**

Philip-Lorca diCorcia

*Keith Ryan, \$30*

1990

Dye coupler print

Image: 15 9/16 × 23 3/16 in. (39.6 × 58.9 cm)

Primary support: 19 15/16 × 24 in. (50.7 × 60.9 cm)

Lender: Los Angeles County Museum of Art

Ralph M. Parsons Fund

Approved

**M.91.388.11**

George Dureau

*Untitled*

1983

Gelatin silver print

Image: 6 5/8 × 6 5/8 in. (16.83 × 16.83 cm)

Primary support: 10 × 8 in. (25.4 × 20.32 cm)

Mat: 16 × 20 in. (40.64 × 50.8 cm)

Lender: Los Angeles County Museum of Art

Gift of Eric Orr

Approved - LACMA obj

**M.2005.103**

Nan Goldin

*The Hug, NYC*

From the series, "The Ballad of Sexual Dependency"

1980

Dye destruction print

Image: 23 1/2 × 15 7/8 in. (59.69 × 40.32 cm)

Primary support: 23 7/8 × 20 in. (60.64 × 50.8 cm)

Lender: Los Angeles County Museum of Art

Photographic Arts Council, 2005

Approved - LACMA obj

**M.2014.56**

April Greiman; Walker Art Center; MIT Press

*Does it Make Sense?*

1986

Photolithograph

Sheet: 25 1/2 × 76 in. (64.77 × 193.04 cm)

Sleeve: 11 × 8 3/4 × 1/4 in. (27.94 × 22.23 × 0.64 cm)

Lender: Los Angeles County Museum of Art

Purchased with funds provided by Maura and Mark Resnick

Approved - LACMA obj



**M.2014.236.1-3**

Ann Hamilton

*(aleph • video)*

1992-1993

Video, color, with sound, looped

Duration: 00:30:00

Installation (video image): 3 1/2 × 4 1/2 in. (8.89 × 11.43 cm)

Lender: Los Angeles County Museum of Art

Gift of Merry Norris

Approved - LACMA obj



**AC1994.125.1**

Rick McKee Hock

*Codex*

1987

90 Internal dye diffusion prints

Frame: 41 1/4 × 45 1/4 × 2 in. (104.78 × 114.94 × 5.08 cm)

Lender: Los Angeles County Museum of Art

Ralph M. Parsons Fund

Approved - LACMA obj



**M.2012.58**

Peter Hujar

*David Wojnarowicz*

1981

Gelatin silver print

Image: 14 3/4 × 14 15/16 in. (37.47 x 37.95 cm); Mat: 22 x 22 in. (55.88 x 55.88 cm); Sheet: 19 15/16 x 16 in.

(50.65 x 40.64 cm)

Lender: Los Angeles County Museum of Art

Ralph M. Parsons Fund

Approved - LACMA obj



**M.2013.229.2a-j**

Mike Kelley

*Torture Table*

1992

Wood, buckets, knife and plastic pillow

a-j) Installation: 36 1/2 × 96 × 48 in. (92.71 × 243.84 × 121.92 cm)

See individual records for individual dimensions

Lender: Los Angeles County Museum of Art

Gift of Per J. Skarstedt

Approved - LACMA obj



**M.2011.203.2.2**

Sherrie Levine

*President Profile I*

1979, printed later

Gelatin silver print

Image: 10 x 8 1/4 in. (25.4 x 20.96 cm); Mat: 20 x 16 in. (50.8 x 40.64 cm)

Lender: Los Angeles County Museum of Art

Gift of James Welling

Approved - LACMA obj



**M.2014.309.1**

Andres Serrano

*Blood and Soil (Blut und Boden)*

1987

Cibachrome

Sheet: 30 × 40 in. (76.2 × 101.6 cm)

Frame: 32 1/2 × 45 × 1 in. (82.55 × 114.3 × 2.54 cm)

Lender: Los Angeles County Museum of Art

Gift of Tom and Janet Unterman

Approved - LACMA obj



**M.2008.109.2**

Maria Sewcz

*Untitled*

From the series, "Inter Esse II"

1987-1989, printed 2008

Gelatin silver print

Sheet: 15 7/8 x 19 7/8 in. (40.32 x 50.48 cm); Image: 12 3/8 x 18 1/2 in. (31.43 x 46.99 cm)

Lender: Los Angeles County Museum of Art

Gift of the artist

Approved - LACMA obj

**AC1994.18.1.1-5**

Jim Shaw

*Computer Degenerated Self-Portrait*

1992

Dye coupler prints

Unframed: 11 x 14 in. (27.94 x 35.56 cm) each

Lender: Los Angeles County Museum of Art

Ralph M. Parsons Fund

Approved - LACMA obj

**AC1992.26.1**

Lorna Simpson

*Counting*

1991

Photogravure, screen print

Frame (Unframed): 73 x 38 in. (185.42 x 96.52 cm)

Frame: 75 7/8 x 40 x 1 7/8 in. (192.72 x 101.6 x 4.76 cm)

Lender: Los Angeles County Museum of Art

Ralph M. Parsons Fund

Approved - LACMA obj

**AC1999.254.4**

Alexis Smith

*Snapshot*

1982

Magazine page, wood frame, miniature camera, and glass

21 3/4 x 19 3/4 in. (55.24 x 50.16 cm)

Lender: Los Angeles County Museum of Art

Gift of Harold I. Huttas

Approved - LACMA obj

**AC1997.235.1**

Kiki Smith

*Untitled*

1992

Dye coupler print

Sheet: 23 1/4 x 15 3/8 in. (59 x 39 cm)

Frame: 29 15/16 x 21 15/16 x 1 1/16 in. (76 x 55.7 x 2.7 cm)

Lender: Los Angeles County Museum of Art

Gift of Cynthia and Eddie Greenwald

Approved - LACMA obj



**AC1994.161.10**

Bruce Weber

*Tyke, Adirondack Park, N.Y.*

1988, printed 1991

Gelatin-silver print

Image: 13 3/8 x 10 1/2 in. (33.97 x 26.67 cm); Sheet: 13 15/16 x 11 in. (35.4 x 27.94 cm)

Lender: Los Angeles County Museum of Art

Gift of Lewis Baltz

Approved - LACMA obj

**M.2012.23.28**

Brian Weil

*Image Created to Eroticize Safe Sex for Education Purposes, Chicago, IL*

1987

Gelatin silver print

Image: 30 1/2 x 30 1/2 in. (77.47 x 77.47 cm)

Primary support: 41 1/4 x 40 1/2 in. (104.78 x 102.87 cm)

Lender: Los Angeles County Museum of Art

Gift of Ken Weil

Approved - LACMA obj

**M.91.51a-e**

Neil Winokur

*Cindy Sherman: Totem*

1985

5 Dye destruction prints

Each: 20 x 16 in. (50.8 x 40.6 cm)

Lender: Los Angeles County Museum of Art

Ralph M. Parsons Fund

Approved - LACMA obj

