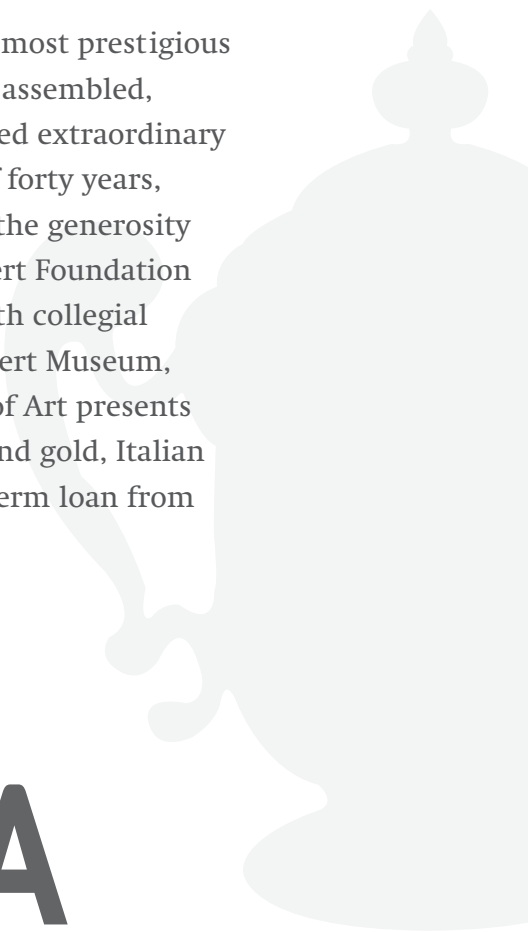


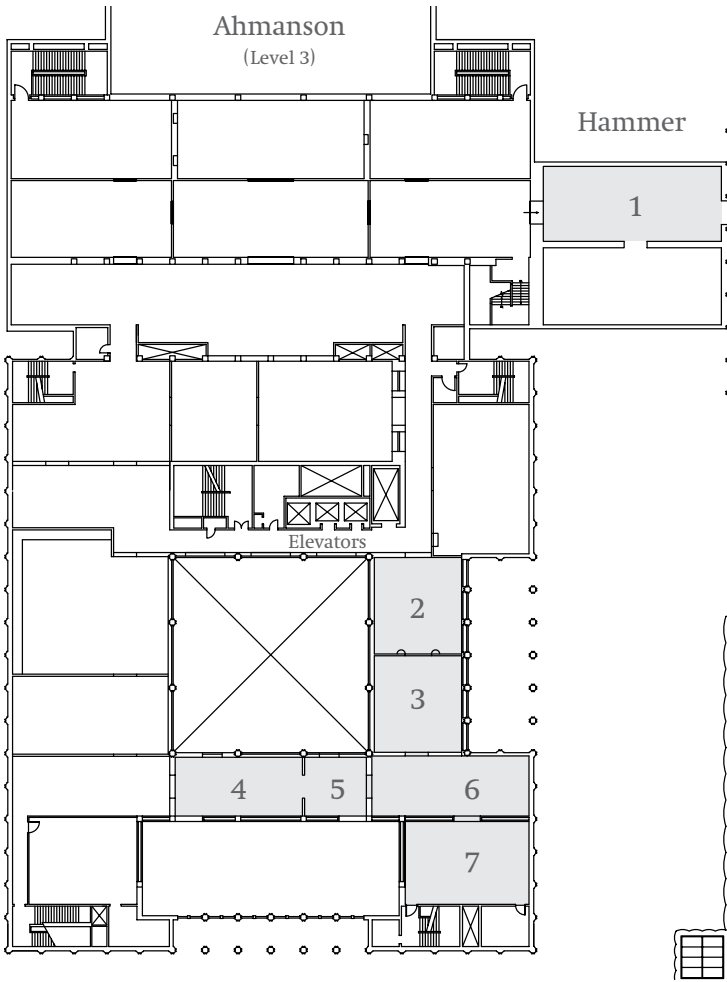
THE GILBERT COLLECTION

The Gilbert Collection, one of the most prestigious collections of decorative arts ever assembled, comprises more than eight hundred extraordinary works acquired over the course of forty years, beginning in the 1960s. Through the generosity of The Rosalinde and Arthur Gilbert Foundation and Lady Marjorie Gilbert, and with collegial support from the Victoria and Albert Museum, the Los Angeles County Museum of Art presents fifty outstanding works of silver and gold, Italian mosaics, and gold boxes on long-term loan from the Gilbert Collection.

AT LACMA



THE GILBERT COLLECTION AT LACMA



1. Koenig Gallery (310)
Silver, gold boxes, and mounted porcelains
2. Holden Gallery (302)
Pietre dure
3. Gilbert Gallery (303)
Silver
4. Bolker Gallery West (310)
Micromosaics
5. Bolker Gallery East (308)
Micromosaics and pietre dure
6. Sprague Gallery (304)
Micromosaics and gold boxes
7. Irvine Gallery (305)
Silver