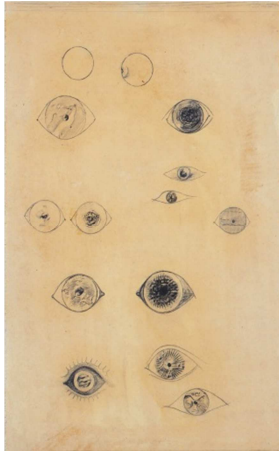
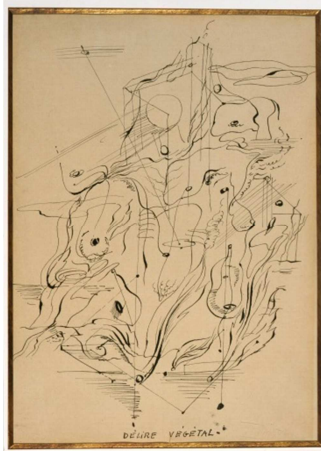


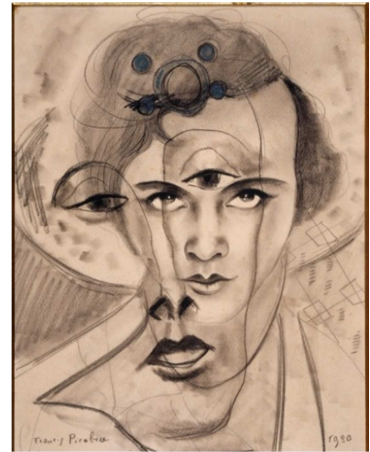
## DRAWING SURREALISM APPROVED IMAGE LIST



1



2



3



4



5



6



7



8



9



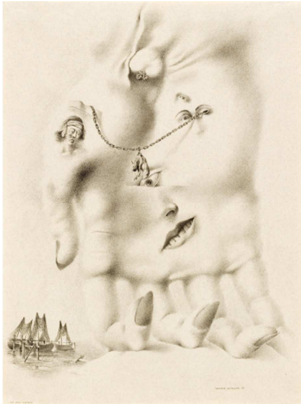
10



11



12



13



14



15

# DRAWING SURREALISM

## PRESS IMAGES, FULL CAPTIONS

1. Max Ernst  
*Système de monnaie solaire*, 1925  
Frottage and graphite  
16 15/16 x 10 1/4 in. (43 x 26 cm)  
Galerie Jeanne Bucher/Jaeger Bucher  
© 2012 Max Ernst Estate/ARS/ADAGP, Paris  
Photo courtesy Galerie Jeanne-Bucher/Jaeger-Bucher, Paris photo by Losi
2. André Masson  
*Délire végétal*, (c. 1925)  
Ink on paper  
16 3/4 x 12 in. (42.5 x 30.5 cm)  
Private collection, Paris  
© 2012 Andre Masson Estate/ARS/ADAGP, Paris
3. Francis Picabia  
*Olga*, 1930  
Oil pastel  
15 1/8 x 12 in. (38.5 x 30.5 cm)  
Musée national d'art moderne, Centre Georges Pompidou, Paris.  
Bequest of Mme Lucienne Rosenberg, 1995  
© 2012 Francis Picabia Estate/ARS/ADAGP, Paris  
Photo © CNAC/MNAM/Dist. RMN (AM2000-198)/Art Resource, NY(ART426466), by Philippe Migeat
4. Jindřich Štyrský  
*Stehyovaci kabinet* (Portable Cabinet), 1934  
Collage  
13 1/4 x 9 1/8 in. (33.5 x 23 cm)  
Private collection, Paris  
Photo © 2012 Museum Associates/LACMA, by Hervé Lewandowski
5. César Moro  
*Adorée au grand air (l'art de lire l'avenir)* (Adorned in the Open air [The Art of Reading The Future]), 1935  
Collage  
21 x 13 cm  
The Research Library, The Getty Research Institute, Los Angeles  
Photo © 2012 The Getty Research Institute, Los Angeles (980029)
6. Georges Hugnet  
*Untitled*, (circa 1935-1936)  
Gouache on paper  
9 3/4 x 13 1/4 in. (24.77 x 33.66 cm)  
LACMA, purchased with funds provided by Alice and Nahum Lainer through the 2006/2007 Drawings Group  
© Georges Hugnet Estate, 2012 Artists Rights Society (ARS), New York/ ADAGP, Paris  
Photo © 2012 Museum Associates/LACMA

- 7.** Eileen Agar  
*Ladybird*, 1936  
Photograph with gouache and ink  
29 5/16 x 19 3/8 in. (74.3 x 49.1 cm)  
Andrew and Julia Murray, Norfolk, U.K.  
© 2012 Eileen Agar Estate, Redfern Gallery, London  
Photo by Chris Harrison
- 8.** Man Ray (Emmanuel Rudnitsky)  
*Safety Pin*, 1936  
Ink and pencil on paper  
14 1/8 x 10 1/8 in. (35.9 x 25.8 cm)  
The Museum of Modern Art, New York. Katherine S. Dreier Bequest (by exchange), 1980  
© 2012 Man Ray Trust/ARS/ADAGP, Paris  
Digital Image © MoMA (473.1980), licensed by SCALA/Art Resource, NY (ART426173)
- 9.** Ei-Kyu  
*Work D*, 1937  
Collage on paper  
10 ½ x 9 ¼ in. (26.7 x 23.5 cm)  
The National Museum of Modern Art, Tokyo  
© 2012 Ei-Kyu Estate  
Photo © National Museum of Modern Art, Tokyo (M-580)
- 10.** Salvador Dalí  
*Study for "The Image Disappears"*, 1938  
Graphite on paper  
20 ¼ x 26 in. (51.4 x 66 cm)  
Private Collection  
© 2012 Salvador Dalí, Fundació Gala-Salvador Dalí/ARS  
Photo © 2012 Museum Associates/LACMA, by Michael Tropea
- 11.** Esteban Francés  
*Untitled (Surreal landscape)*, 1938  
Colored pencils on paper  
9 x 12 1/4 in. (22.9 x 31.1 cm)  
Private collection, NY  
© 2012 Esteban Francés Estate  
Photo © 2012 Museum Associates/LACMA by Michael Bodycomb
- 12.** Matta (Roberto Sebastián Antonio Matta Echaurren)  
*Original art for "Maldoror"*, c.1938  
Ink, gouache and graphite on paper  
14 ½ x 11 ¾ in. (36.8 x 29.9 cm)  
Private collection  
© 2012 Roberto-Sebastián Matta Echaurren Estate/ARS/ADAGP, Paris

- 13.** Federico Castellón  
*Her Eyes Trembled*, 1939  
Pen and ink on paper  
15 3/4 x 11 5/8 in. (40.01 x 29.53 cm)  
LACMA, gift of the 2006/2007 Drawings Group  
© 2012 Federico Castellón Estate, Courtesy of Michael Rosenfeld  
Gallery LLC, NY  
Photo © 2012 Museum Associates/LACMA
- 14.** Jacques Hérold  
*Tête cristallisé*, 1942  
Charcoal  
24 3/8 x 18 5/8 in. (62 x 47.5 cm)  
Mr. J.Y. Herold  
© 2012 Jacques Herold Estate/ARS/ADAGP, Paris
- 15.** Alfonso Ossorio  
*Untitled*, 1944  
Ink and watercolor on paper  
14 x 20 in. (35.56 x 50.8 cm)  
LACMA, gift of the Ossorio Foundation  
© 2012 Alfonso Ossorio Estate  
Photo © 2012 Museum Associates/LACMA
- 

**Press Image Bank:** To access the images online, visit LACMA's Press Image Bank at [lacma.org/press](http://lacma.org/press)

**Media contact:** LACMA Communications, [press@lacma.org](mailto:press@lacma.org), 323-857-6522