

LACMA CPJC_Rotation 2

EX.2489.25

China

The Three Stars Playing Weiqi (Yuan dynasty, late 13th- 14th century)

Hanging scroll; ink and colors on silk; ivory knobs

image: 59 11/16 × 31 7/16 in. (151.6 × 79.8 cm)

overall: 101 9/16 × 36 7/8 in. (258 × 93.6 cm)- includes knobs

Nezu Museum



EX.2489.33

Wu Wei

The Hermit Xu You and the Oxherd Chaofu (Ming dynasty, 15th century)

Hanging scroll; ink and light colors on silk; ivory knobs

Image: 56 3/16 × 30 9/16 in. (142.7 × 77.6 cm)

Overall: 95 1/4 × 36 15/16 in. (242 × 93.9 cm)

Tokugawa Art Museum



EX.2489.39

Dong Qichang

The Pan'gu Farewell (Ming dynasty, early 17th century)

Handscroll; ink and light colors on silk

overall: 16 3/4 × 266 5/8 in. (42.6 × 677.3 cm)

image: 16 × 148 9/16 in. (40.7 × 377.3 cm)

Osaka City Museum of Fine Arts



EX.2489.44

Xia Gui (attributed to)

Misty Rivershore Landscape (Southern Song dynasty)

Album leaf mounted as hanging scroll; ink on silk; ivory knobs

image: 8 7/8 × 10 in. (22.6 × 25.4 cm)

overall: 67 5/16 × 20 1/2 in. (171 × 52 cm)

Tokyo National Museum



EX.2489.46

The Four Sleepers (Yuan dynasty, before 1351)

Hanging scroll; ink on paper; ivory knobs

image: 34 9/16 × 13 1/2 in. (87.8 × 34.3 cm)

overall: 74 × 22 1/16 in. (188 × 56 cm)

Tokyo National Museum



EX.2489.48a

Yan Hui (attributed to)
Hanshan and Shide (Yuan dynasty)
Pair of hanging scrolls; ink and colors on silk
image: 50 5/16 × 16 7/16 in. (127.8 × 41.7 cm)
overall: 88 9/16 × 26 3/8 in. (225 × 67 cm)
Tokyo National Museum



EX.2489.48b

Yan Hui (attributed to)
Hanshan and Shide (Yuan dynasty)
Pair of hanging scrolls; ink and colors on silk
image: 50 5/16 × 16 7/16 in. (127.8 × 41.7 cm)
overall: 88 9/16 × 26 3/8 in. (225 × 67 cm)
Tokyo National Museum



EX.2489.51

Lü Wenying
The Knick-knack Peddler (Ming dynasty, 14-15th century)
Hanging scroll; ink and colors on silk; ivory knobs
image: 52 3/8 × 31 5/16 in. (133 × 79.5 cm)
overall: 94 7/8 × 40 3/16 in. (241 × 102 cm)
Tokyo National Museum



EX.2489.52a

Liu Jun
Hanshan, Shide, Hama, and Tiegua (Ming dynasty, late 15th century)
Set of four hanging scrolls; ink and colors on silk
image: 52 13/16 × 28 3/4 in. (134.1 × 73.1 cm) each
overall: 95 11/16 × 38 3/16 in. (243 × 97 cm) each
Tokyo National Museum



EX.2489.52b

Liu Jun

Hanshan, Shide, Hama, and Tieguai (Ming dynasty, late 15th century)

Set of four hanging scrolls; ink and colors on silk

image: 52 13/16 × 28 3/4 in. (134.1 × 73.1 cm) each

overall: 95 11/16 × 38 3/16 in. (243 × 97 cm) each

Tokyo National Museum



EX.2489.52c

Liu Jun

Hanshan, Shide, Hama, and Tieguai (Ming dynasty, late 15th century)

Set of four hanging scrolls; ink and colors on silk

image: 52 13/16 × 28 3/4 in. (134.1 × 73.1 cm) each

overall: 95 11/16 × 38 3/16 in. (243 × 97 cm) each

Tokyo National Museum



EX.2489.52d

Liu Jun

Hanshan, Shide, Hama, and Tieguai (Ming dynasty, late 15th century)

Set of four hanging scrolls; ink and colors on silk

image: 52 13/16 × 28 3/4 in. (134.1 × 73.1 cm) each

overall: 95 11/16 × 38 3/16 in. (243 × 97 cm) each

Tokyo National Museum



EX.2489.53a

Lü Ji

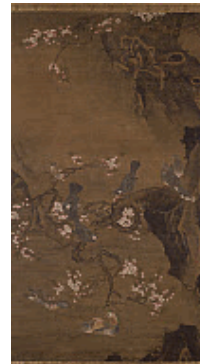
Birds and Flowers of the Four Seasons (Ming dynasty, 15-16th century)

Set of four hanging scrolls; ink and colors on silk

image: 68 11/16 × 39 1/4 in. (174.4 × 99.7 cm)

overall: 105 1/2 × 48 1/16 in. (268 × 122 cm)

Tokyo National Museum



EX.2489.53b

Lü Ji

Birds and Flowers of the Four Seasons (Ming dynasty, 15-16th century)

Set of four hanging scrolls; ink and colors on silk

image: 68 11/16 × 39 1/4 in. (174.4 × 99.7 cm)

overall: 105 1/2 × 48 1/16 in. (268 × 122 cm)

Tokyo National Museum



EX.2489.53c

Lü Ji

Birds and Flowers of the Four Seasons (Ming dynasty, 15-16th century)

Set of four hanging scrolls; ink and colors on silk

image: 68 11/16 × 39 1/4 in. (174.4 × 99.7 cm)

overall: 105 1/2 × 48 1/16 in. (268 × 122 cm)

Tokyo National Museum



EX.2489.53d

Lü Ji

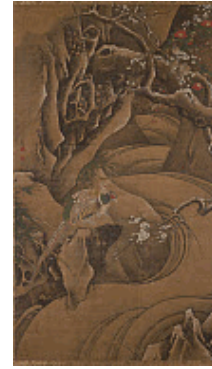
Birds and Flowers of the Four Seasons (Ming dynasty, 15-16th century)

Set of four hanging scrolls; ink and colors on silk

image: 68 11/16 × 39 1/4 in. (174.4 × 99.7 cm)

overall: 105 1/2 × 48 1/16 in. (268 × 122 cm)

Tokyo National Museum



EX.2489.54

Wang E

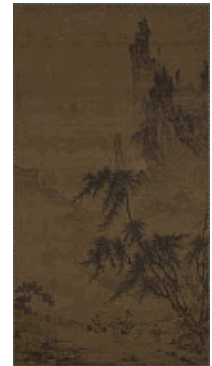
Landscape with Figures beneath Tree by Bridge (Ming dynasty, first half of 16th century)

Hanging scroll; ink and light colors on silk; ivory knobs

image: 57 3/8 × 31 7/16 in. (145.7 × 79.8 cm)

overall: 84 5/8 × 41 5/16 in. (215 × 105 cm)

Tokyo National Museum



EX.2489.55

Zhu Duan

Solitary Angler on a Winter River (Ming dynasty, late 15- early 16th century)

Hanging scroll; ink and light colors on silk; ivory knobs

image: 67 15/16 × 43 1/8 in. (172.5 × 109.5 cm)

overall: 96 1/16 × 52 3/8 in. (244 × 133 cm)

Tokyo National Museum



EX.2489.57

Xie Shichen

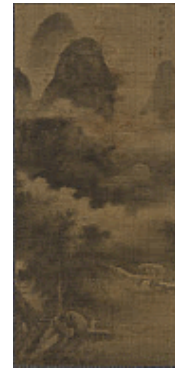
Wangchuan in Mist and Clouds (Ming dynasty, 16th century)

Hanging scroll; ink and light colors on silk

image: 57 13/16 × 26 1/4 in. (146.9 × 66.7 cm)

overall: 85 13/16 × 37 3/8 in. (218 × 95 cm)

Tokyo National Museum



EX.2489.59

Xu Wei

Plants and Blossoming Flowers (Ming dynasty, 1575)

Handscroll; ink on paper

overall: 11 3/16 × 261 7/8 in. (28.4 × 665.1 cm)

Tokyo National Museum



EX.2489.60

King of Hell (Qin'guang Wang) (Yuan dynasty, 14th century)

Hanging scroll; ink, colors, and gold on silk

Image: 56 1/4 × 24 1/8 in. (142.8 × 61.2 cm)

Overall: 94 5/8 × 35 9/16 in. (240.3 × 90.3 cm)

Seikado Bunko Art Museum



EX.2489.61

Lu Zhi

Lotus Flowers by Rock (Ming dynasty, 16th century)

Hanging scroll; ink and colors on silk; ivory knobs

Image: 45 13/16 × 25 in. (116.3 × 63.5 cm)

Overall: 83 7/16 × 35 1/4 in. (212 × 89.5 cm)

Seikado Bunko Art Museum



EX.2489.63

Lan Ying

Autumn Landscape in the Manner of Wang Meng (Ming dynasty, dated 1638)

Hanging scroll; ink and colors on silk; ivory knobs

Image: 73 11/16 × 20 9/16 in. (187.2 × 52.2 cm)

Overall: 103 1/4 × 31 1/4 in. (262.2 × 79.4 cm)

Seikado Bunko Art Museum



EX.2489.66

Wang E

High Wind on a Snowy Pass (Ming dynasty, late 15th century)

Hanging scroll; ink and colors on silk

Image: 73 3/4 × 38 3/4 in. (187.4 × 98.5 cm)

Overall: 116 15/16 × 46 3/4 in. (297.1 × 118.8 cm)- does not include knobs

Idemitsu Museum of Arts



EX.2489.71

Zhan Wang

Jiashanishi (Artificial Rock) (2006)

Stainless steel

141 11/16 × 47 3/16 × 66 7/8 in. (359.89 × 119.86 × 169.86 cm)

The Museum of Contemporary Art, Los Angeles

The East West Bank Collection, purchased and
promised gift of East West Bank



Total number of objects: 25