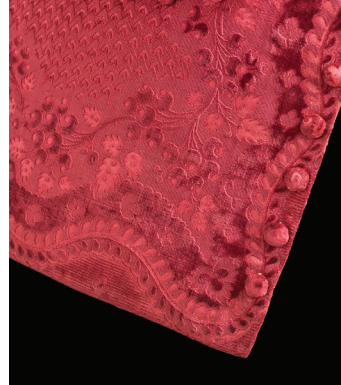




Man's Waistcoat, France, c. 1750, silk cut, uncut, and voided velvet (ciselé) on satin foundation, center-back length: 27 1/2 in. (69.85 cm), purchased with funds provided by Suzanne A. Saperstein and Michael and Ellen Michelson, with additional funding from the Costume Council, the Edgerton Foundation, Gail and Gerald Oppenheimer, Maureen H. Shapiro, Grace Tsao, and Lenore and Richard Wayne, M.2007.211.812, photo © 2010 Museum Associates/LACMA

This handsewn sleeveless waistcoat is made of silk cut, uncut, and voided velvet (*ciselé*). The meandering ribbon and acorn pattern was woven to follow the edges of the center-front and hem of the finished garment in a method known as *à disposition*. The concept of weaving textiles in this way originated in Lyon, France. When worn, the woven design appears to curve at the center-front opening because of long darts at the waist; these darts, hidden by the pocket flaps, assure a finer fit.

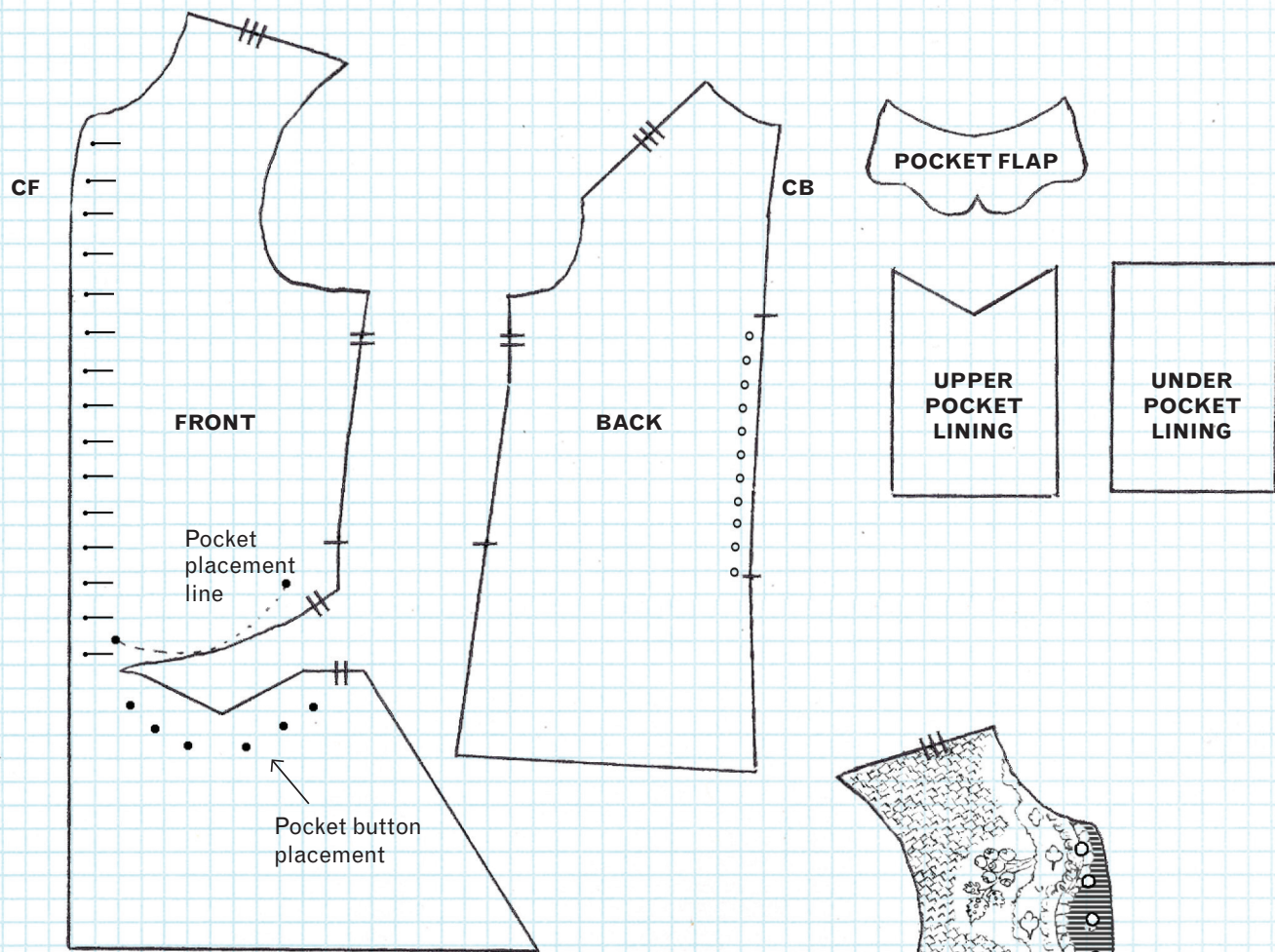
As suit coats became closer-fitting in the mid-eighteenth century, sleeveless waistcoats became more common. This example limits the use of luxurious velvet to the waistcoat's front where it would have been most visible when worn under a coat.



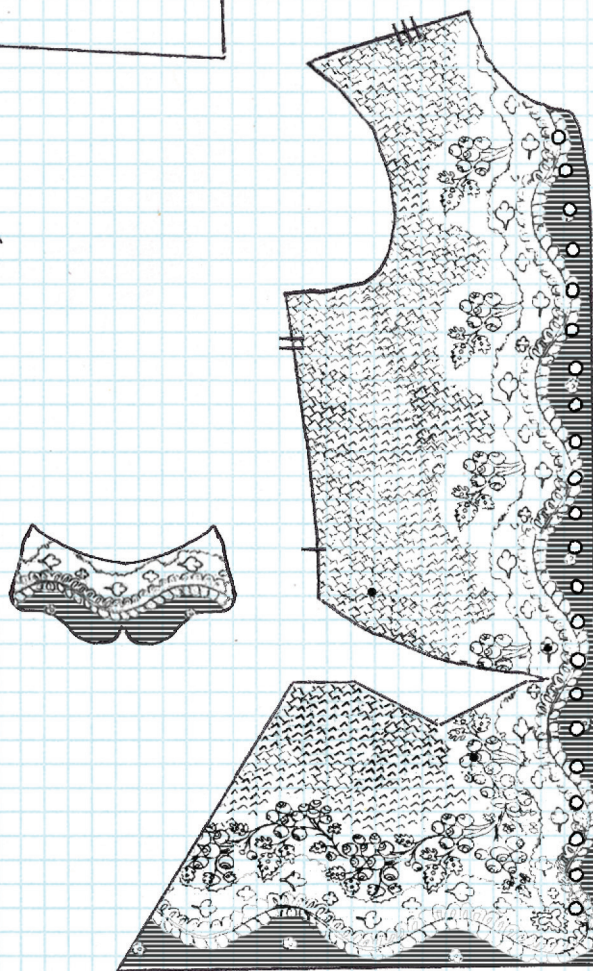
NOTES:

1. Fabric grain follows vertical lines of graph paper.
2. Pattern pieces are drawn without seam allowance.
3. The waistcoat is back-stitched; lining and pocket flaps are whip-stitched.
4. Center-front closure of twenty-two $\frac{5}{8}$ -inch-diameter self-covered buttons with fifteen $1\frac{1}{4}$ -inch functional buttonholes reinforced with buttonhole stitch that extends $\frac{1}{2}$ inch beyond the buttonhole opening; seven buttons are non-functional.
5. Six $\frac{5}{8}$ -inch diameter self-covered non-functional buttons are located below each pocket opening. Finished pocket flaps conceal most of the buttons.
6. Side seams terminate at pocket.
7. The back of the waistcoat is composed of linen plain weave. The collar line and the armscye are finished on the inside with a 1-inch bias strip of the same linen. The center-back seam is only sewn $8\frac{1}{2}$ inches from the top. Beneath this seam, eleven pairs of eyelets (round holes reinforced with thread) line a $19\frac{1}{2}$ -inch open-seam slit. These are interlaced with twill-tape to adjust the size.
8. To further adjust size, two pairs of $\frac{1}{2}$ -inch-wide linen tapes, each about 18 inches long, are sewn at the side seam, one at $18\frac{3}{4}$ and one at $8\frac{3}{4}$ inches from the hem and tied at the center back.
9. Center-front edges and skirts are stiffened with an interlining.
10. The waistcoat fronts, pockets, and pocket flaps are lined with linen plain weave.

Man's Waistcoat



SCALE DRAWING OF CISELÉ VELVET DESIGN



1:1 Inch

CF = Center front
CB = Center back